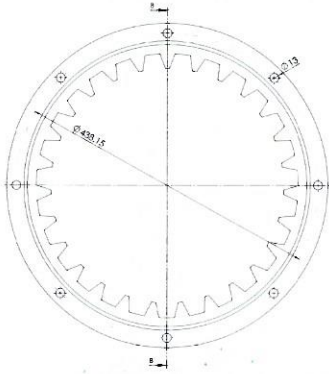
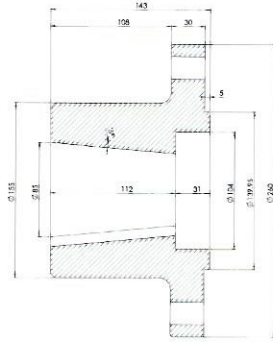
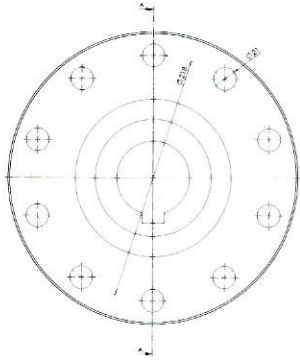


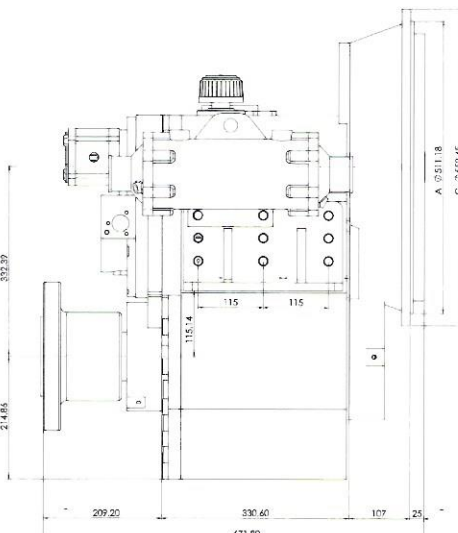
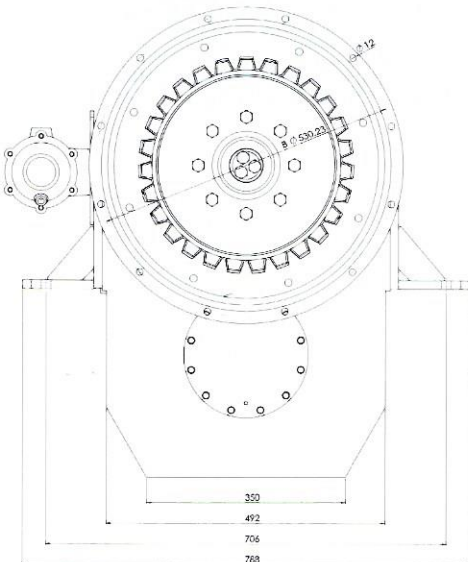
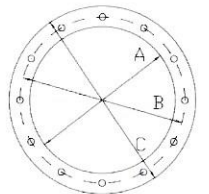
## U-2019

- 1 Hidrolik Kumanda Kolu *Hydraulic Command Lever*
- 2 Soğutucu *Cooler*
- 3 Hidrolik Pompa *Hydraulic Pump*
- 4 Kaplin *Coupling*
- 5 Kaldırma Sacları *Lifting Hoop*
- 6 Yağ Koyma Yeri *Lubricating Inlet*
- 7 Bağlantı Flanşı *Connection Flange*
- 8 Gövde *Main Housing*
- 9 Yağ Çubuğu *Lubricant Bar*
- 10 Şanzıman Ayağı *Transmission mechanism Foot*
- 11 Yağ Boşaltma Tapası *Lubricating Outlet Plug*
- 12 Filtre *Filter*
- 13 Yıldız Kaplin *Star Coupling*
- 14 Spiral Kolu *Spiral Lever*



### SAE BAĞLANTI FLANŞI ÖLÇÜLERİ SAE BELL HOUSING DIMENSIONS

SAE No.	A		B		C	
	mm	in	mm	in	mm	in
0	647,70	25,5	679,45	26,75	711,20	28
1	511,18	20,125	530,23	20,875	552,45	21,75
2	447,68	17,625	466,73	18,375	488,95	19,25



25 mm derinliği olan yıldız kaplin ters çevildiğinde derinlik 58 mm olabilir.

*The star coupling depth which is ordinary 25 mm, when it is reversed, it's depth can be 58 mm.*

## U-2019 HİDROLİK DENİZ ŞANZIMANI

### U-2019 HYDRAULIC MARITIME TRANSMISSION MECHANISM

U 2019 Hidrolik Deniz Şanzımanı 450 HP (331,2 KW) ile 1000 HP (736 KW) arasındaki motorlara akuple edilir. U 2019 tip şanzımanda da ileri kumandayı 'devamlı geri' olarak , geri kumandayı da 'devamlı ileri' kumanda olarak kullanabilirsiniz. Şanzımanda hiçbir arızaya sebep olmaz. Şanzıman seçimi yapılırken motor gücüne, redüksiyon oranına , teknenin yüklü ağırlığına bakılmalıdır.

*U 2019 Hydraulic Maritime Transmission can be couple for all engines between 450 HP (331,2 KW) to 1000 HP (736 KW) . In U 2019 transmission mechanism , you may use its forward command as 'continuous reverse motion ' and its reverse command as 'continuous forward' . These do not cause any breakdowns in transmission mechanism . While you are choosing transmission mechanism, you have to know engine's power, reduction rate , the boats loaded weight.*

#### **Dikkat: / Attention:**

1- Şanzıman kumanda kolunu , en az 3-5 saniye geçmeden , ileri-geri yapmayınız.

*Do not move transmission mechanism's command lever forward or backward at least 3-5 seconds passes.*

2- Kumanda kolu tam oturmazsa basınç düşer. Bundan dolayı şanzıman yarım debriyaj (kaçırarak) çalışır.

*If command lever does not place correctly, the pressure can drop. Because of this transmission mechanism can ooze during working.*

#### **TEKNİK ÖZELLİKLER :**

#### **TECHNICAL SPECIFICATIONS:**

**Ağırlık / Weight :** 590 kg.

**Hidrolik çalışma basıncı**

**Hydraulic Working Pressure:** 25 - 30 Atm.

**Yağlama / Lubricating :** 20 Lt

#### **YAĞ ÇEŞİTLERİ / OIL KINDS**

FİRMA/FIRM	
PETROL OFİSİ	Maxitrak Transmisyon 300
MOBİL	Mobilfluid 422
SHELL	Donax TT
BP	Terrac Tracran 8 / Fluid 8 8
CASTROL	Agri Powertrans
PETRONAS	Ambra Multi G3

U-2019	Hafif Hizmet Light Duty		Orta Hizmet Medium Duty		Ağır Hizmet Continuous Duty		Devir / RPM	
	HP	KW	HP	KW	HP	KW	Min	Max
Redüksiyon Oranı Reduction Rate								
3,12/1	800	588,8	700	515,2	650	478,4	1800	3000
3,51/1	750	552	650	478,4	600	441,6		
4,23/1	700	515,2	600	441,6	540	397,4		
4,52/1	650	478,4	550	404,8	500	368		
5,18/1	550	404,8	500	368	450	331,2		