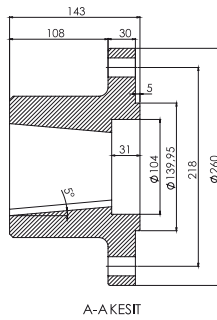
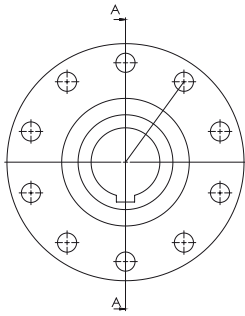
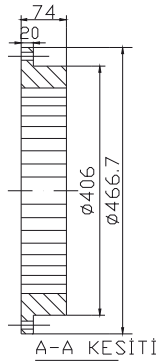
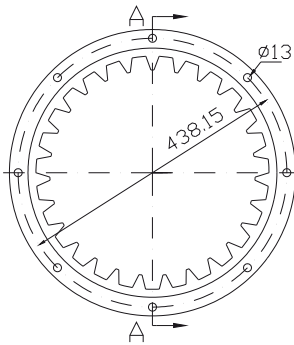


U-2014

- 1 Hidrolik Kumanda Kolu *Hydraulic Command Lever*
- 2 Soğutucu *Cooler*
- 3 Hidrolik Pompa *Hydraulic Pump*
- 4 Kaplin *Coupling*
- 5 Kaldırma Sacları *Lifting Hoop*
- 6 Yağ Koyma Yeri *Lubricating Inlet*
- 7 Bağlantı Flanşı *Connection Flange*
- 8 Gövde *Main Housing*
- 9 Yağ Çubuğu *Lubricant Bar*
- 10 Şanzıman Ayağı *Transmission mechanism Foot*
- 11 Yağ Boşaltma Tapası *Lubricating Outlet Plug*
- 12 Filtre *Filter*
- 13 Yıldız Kaplin *Star Coupling*
- 14 Spiral Kolu *Spiral Lever*



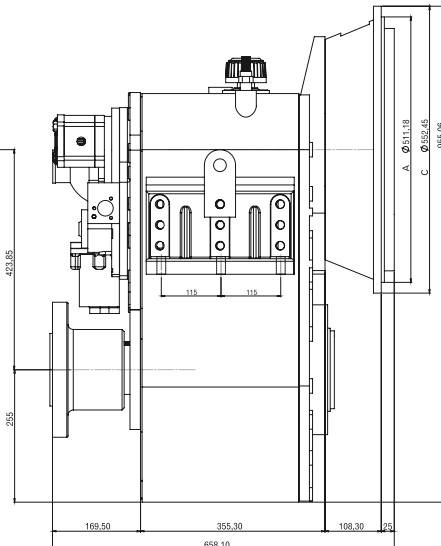
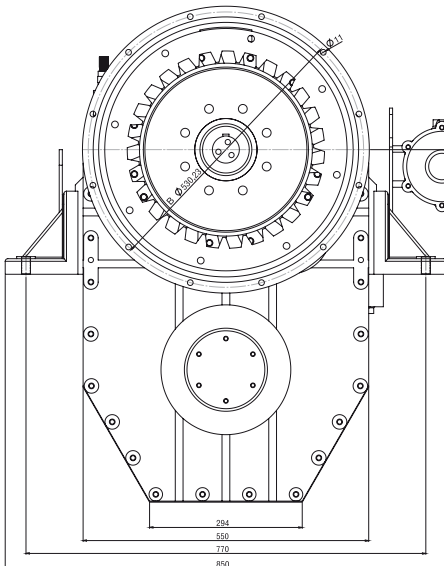
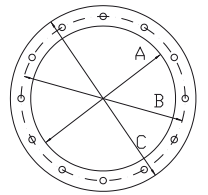
A-A KESİTİ



A-A KESİTİ

SAE BAĞLANTI FLANŞI ÖLÇÜLERİ SAE BELL HOUSING DIMENSIONS

SAE No.	A		B		C	
	mm	in	mm	in	mm	in
0	647,70	25,5	679,45	26,75	711,20	28
1	511,18	20,125	530,23	20,875	552,45	21,75



25 mm olan yıldız kaplin ters çevrildiğinde 58 mm olabilir.

The stars coupling which is ordinary 25 mm can be 58 mm when it is reversed.

U-2014 HİDROLİK DENİZ ŞANZIMANI

U-2014 HYDRAULIC MARITIME TRANSMISSION MECHANISM

U-2014 Hidrolik Deniz Şanzımanı 600 HP (441,6 KW) ile 1000 HP (736 KW) arasındaki motorlara akuple edilir. U-2014 tip şanzımanda ileri kumandayı 'devamlı geri' olarak , geri kumandayı da 'devamlı ileri' olarak kullanabilirsiniz. Şanzımanda hiçbir arızaya sebep olmaz. Şanzıman seçimi yapılırken motor gücüne, redüksiyon oranına, teknenin yüklü ağırlığına bakılmalıdır.

U-2014 Hydraulic Maritime Transmission can be couple for all engines between 600 HP (441,6 KW) to 1000 HP (736 KW). In U-2014 transmission, you may use its forward command as 'continuous reverse motion ' and its reverse command as 'continuous forward' . These do not cause any breakdowns in transmission mechanism . While you are choosing transmission mechanism, you have to know engine's power, reduction rate , the boats loaded weight.

Dikkat: / Attention:

1- Şanzıman kumanda kolunu , en az 3-5 saniye geçmeden , ileri-geri yapmayınız.

Do not move transmission mechanism's command lever forward or backward at least 3-5 seconds passes.

2- Kumanda kolu tam oturmazsa basınç düşer. Bundan dolayı şanzıman yarım debriyaj (kaçırarak) çalışır.

If command lever does not place correctly, the pressure can drop. Because of this transmission mechanism can ooze during working.

TEKNİK ÖZELLİKLER :

TECHNICAL SPECIFICATIONS:

Ağırlık / Weight : 710 kg.

Hidrolik çalışma basıncı

Hydraulic Working Pressure: 25 - 30 Atm.

Yağlama / Lubricating : 24 Lt

YAĞ ÇEŞİTLERİ / OIL KINDS

FİRMA/FIRM	ISO32	ISO46
BP	Energol HLP32	Energol HLP46
MOBİL	D.T.E. 24	D.T.E. 25
PETROL OFİSİ	RANDO OIL HD32	RANDO OIL HD46
SHELL	TELLUS 32	TELLUS 46
	SAE 20W	

U-2014	Hafif Hizmet Light Duty		Orta Hizmet Medium Duty		Ağır Hizmet Continious Duty		Devir / RPM	
	HP	KW	HP	KW	HP	KW	Min	Max
Redüksiyon Oranı Reduction Rate								
3/1	1000	736	900	662,4	800	588,8	1800	3000
3,5/1	900	662,4	800	588,8	750	552		
4/1	830	610,9	740	544,6	700	515,2		
4,5/1	750	552	680	500,5	650	478,4		
5/1	700	515,2	600	441,6	600	441,6		